

PRODUCT DATA

The SmartDitch system is a corrugated section of HDPE sheet formed in a predetermined shape. In the thermoforming process, the plastic sheet is heated to forming temperatures, allowing it to conform to the mold. The minimum formed thickness in all of the channels is 55 mil.

The versatility of this manufacturing process provides Penda with unmatched in-house sheet and thermoforming capabilities that enable us to deliver greater production efficiency on a full range of designs.

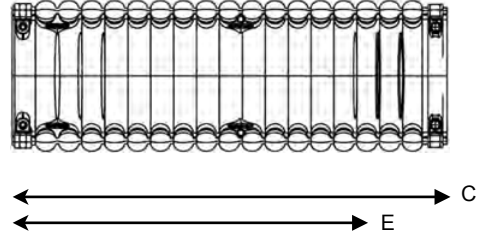
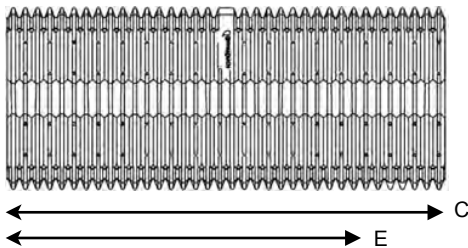
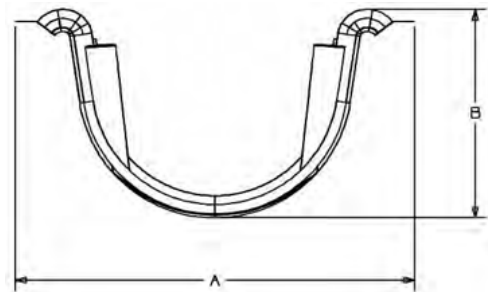
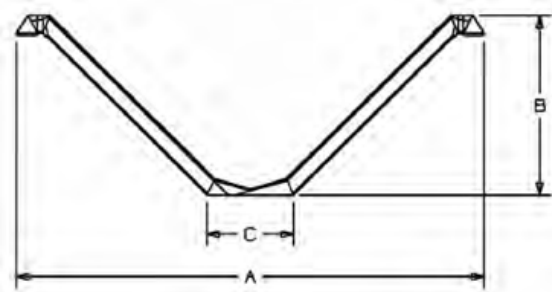
Penda supports your operation at every level, right from the start. Our world-class design/engineering capabilities allow us to partner with you to meet virtually any project need.

PRODUCT ATTRIBUTES, DIMENSIONS & WEIGHTS

SmartDitch offers water management channels in the following specific depth/sizes:

- Trapezoidal design
 - 12" depth series
 - 24" depth series
- Semi-circular design (Above Ground)
 - 24" depth series

Note: The semi-circular design is for above ground installations only by use of saddles.



ITEM DESCRIPTION	ITEM #	12" DEPTH TRAPEZOIDAL	24" DEPTH TRAPEZOIDAL	24" DEPTH SEMI-CIRCULAR
Overall exterior width	A	50.00 in / 1270.00.mm	80.00 in / 2032 mm	39.00 in / 990.60 mm
Overall exterior height	B	16.25 in / 412.75 mm	30.00 in / 762 mm	19.00 in / 482.60 mm
Bottom channel exterior width	C	10.00 in / 254.00 mm	15.25 in / 387 mm	N/A (Rounded Bottom)
Overall exterior length	D	120.00 in / 3048.00 mm	97.00 in / 2463 mm	93.00 in / 2362.20 mm
Lay length	E	112.00 in / 2844.80 mm	92.75 in / 2356 mm	88.00 in / 2235.20 mm