

# CAMP PENDLETON ENGINEERS SPECIFY SMARTDITCH TO SOLVE LANDFILL EROSION ISSUES

RIP RAP FAILS TO ELIMINATE SEVERE EROSION ON LANDFILL'S ACCESS ROAD



Camp Pendleton landfill access road prior to SmartDitch installation

## Problem

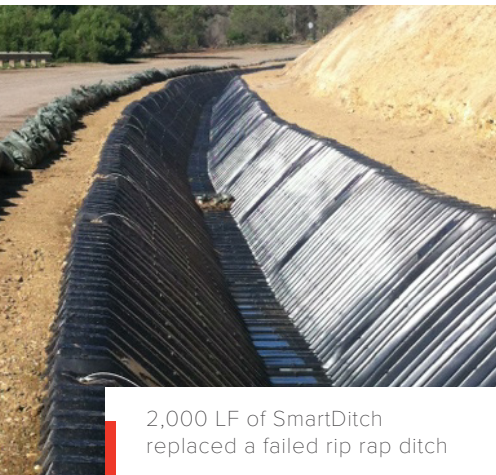
Years of failing rip rap in the landfill's stormwater control management system forced engineers to look for a better solution to erosion occurring along the Camp Pendleton Marine Corp. base landfill. The primary concern was the loss of the road's sub-base material and the deterioration of the road shoulder.

## Solution

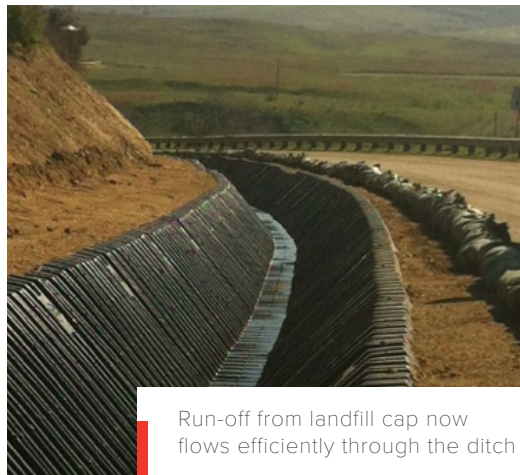
After looking at alternatives, Camp Pendleton's landfill Engineer chose SmartDitch, a trapezoidal-shaped, HDPE thermoformed ditch lining system that is rapidly becoming a most popular choice among landfill operators as part of their stormwater management solutions. This is primarily due to its ease of installation, excellent drainage and flow properties, and overall project cost savings.

## Pre-Construction Meeting Important to Successful Installation

Having never installed SmartDitch before, the pre-construction meeting was an important first step in the installation's success. The engineer and in-house contractor had a chance to become familiar with the product and its installation procedures. SmartDitch representatives also reviewed installation techniques and discussed using modified equipment enhance project productivity. In this case, the military base's Civil Service Metal Trades Shop chose to fabricate a trenching bucket and attached it to Gradall excavator. Pre-shaping the ditch prior to lining made the installation go much faster and required less backfilling efforts. In all, 2,000 LF of SmartDitch was installed along the access road and took less than 2 weeks to complete.



2,000 LF of SmartDitch replaced a failed rip rap ditch



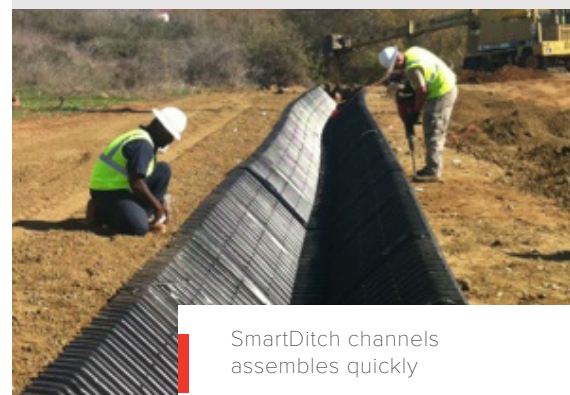
Run-off from landfill cap now flows efficiently through the ditch

## Quick Facts

- ◆ **PRODUCT:** 24" Trapezoidal SmartDitch
- ◆ **LENGTH:** 2,000 LF
- ◆ **BEDDING AND BACKFILL:** Class II A Sand
- ◆ **CONSTRUCTION TIME:** 11 Days (includes ditch preparation and SmartDitch installation, backfilling)
- ◆ **INSTALLATION CONTRACTOR:** Full-Time Heavy Equipment Operators - Camp Pendleton
- ◆ **DISTRIBUTOR:** Grangetto's Farm & Garden Supply, Escondido, CA



A modified bucket pre-shape the ditch



SmartDitch channels assemble quickly

SmartDitch is manufactured in the USA. It is a safe, economical, long-lasting, and environmentally sound irrigation channel lining solution. For more information on the SmartDitch and the MegaDitch HDPE Channel Lining Systems contact:



866.576.2783 SMARTDITCH.COM