

# SANTA BARBARA NEIGHBORHOOD DITCH REHABILITATION

## Problem

Living with unstable slopes and erosion is an all too common reality in the crowded neighborhoods of Santa Barbara, CA. Homes are built with minimal separation, and drainage systems often become disrupted with vegetation. When the challenge of repairing and maintaining a ditch between their homes arose, some residents turned to SmartDitch.

## Solution

Between residential homes a 15" corrugated metal pipe (CMP) drained from the roadway into a vegetated ditch running along property lines. During heavy rain events the flow was disrupted by vegetation causing flooding in yards and erosion at the bottom of the slope. After giving consideration to extending the pipe down the slope or lining the ditch with concrete, a third option of using SmartDitch was chosen. SmartDitch is a corrugated HDPE liner that is designed to fit into an existing or new construction ditch.

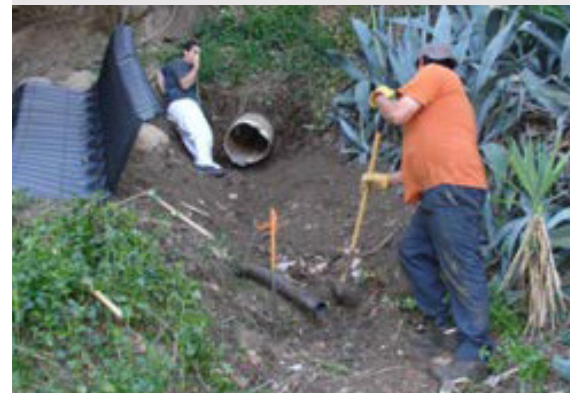
Approximately 135 lineal feet of the 12" Deep Trapezoidal SmartDitch product was to be laid on the slope. Vegetation and debris were cleared from the flow line of the ditch prior to installation. The liner sections were positioned at the opening of the 15" CMP allowing water to flow in. The course of the ditch followed the original drainage ditch requiring the liner to be installed with several small curves. Stone embedment material was brought in to fill the voids of the original ditch along the sides of the channel sections for slope stabilization. At the bottom of the slope the new lined ditch emptied into a natural drainage swale.



The installation of the ditch liner took approximately two days including the clearing of the vegetation and debris from the existing ditch. The installation crew consisted of local residents working with hand tools. The curves were installed by offsetting the flow line of the sections a small amount at each joint, creating a natural looking flow path. Because of SmartDitch's HDPE construction maintenance on this ditch will be minimal, ensuring years of trouble free operation.

## The Reasons SmartDitch Was Chosen

- ◆ Stable channel design to prevent hillside erosion
- ◆ Superior flow characteristics to improve the flow of the water for drainage purposes
- ◆ Lower installation and maintenance costs



SmartDitch is manufactured in the USA. It is a safe, economical, long-lasting, and environmentally sound irrigation channel lining solution. For more information on the SmartDitch and the MegaDitch HDPE Channel Lining Systems contact:



866.576.2783 SMARTDITCH.COM